



In the Name of Allāh, the Most Gracious, the Most Merciful

**FINALTERM EXAMINATION  
Spring 2014**

Q1#: Combining the “fuzzy rules” is done by the technique(s).

- MAX-MAX
- MAX-MIN
- **MIN-MAX PG # 242**
- Both MIN-MAX and MAX-MIN

The output of a fuzzy system is computed by using:

The MIN-MAX technique for combining fuzzy rules

Q2#: A set of software that handle all database related operations of an organization is called \_\_\_\_\_.

- **Database management system**
- Database design system
- Database access system
- Content management system

Q3#: Every phase of the project development require reporting on completion. When a developer completes his/her assigned module, he has to report to the\_\_\_\_\_.

- Team Lead
- **Project Manager**
- CEO
- IT Manager

Q4#: LCD display screens provide\_\_\_\_\_ display.

- 1 dimensional
- **2 dimensional      PG#305**
- 3 dimensional
- 4 dimensional

Like CRT monitors, LCDs are 2-D displays

Q5#: A Home page is a part of a \_\_\_\_\_.

- Terminal
- **Web site    PG#18**
- Browser
- Protocol

#### **What is a Web site?**

A Web site is a related collection of World Wide Web (WWW) files that includes a Beginning file called a home page.

Q6#: Which of the following is a true statement?

- ☐ Flat-file storage is better than tabular storage.
- ☒ Tabular storage is better than flat-file storage. PG#257
- ☐ Flat-file storage is better than relational storage.
- ☐ Tabular storage is better than relational storage.

**Tabular storage is better than flat-file storage**

Q7#: What will be the output of the statements given below?

```
country="Hello Pakistan";  
document.write (country.charAt (6));
```

- ☒ Blank Space
- ☐ p
- ☐ a
- ☐ k

Q8#: Which of the following is not true for JavaScript?

- ☐ Scripting Language
- ☐ Case Sensitive Language
- ☐ Object Based Language
- ☒ Markup Language PG#119 and 120

**JavaScript is not a markup language ,HTML is a markup language  
Also JavaScript is scripting, case sensitive and object based language**

Q9#: Which of the following symbol is used in JavaScript to add multiple line comments in a program?

- ☐ /
- ☐ //
- ☒ /\* PG#149
- ☐ /\*\*

*Multi-line comments*

/\* Author: Bhola

Creation Date: 24 March 2003 \*/

Q10#: In an IP address, there are four set of numbers which are separated by periods.

- ☐ 12-bit
- ☐ 16-bit
- ☐ 32-bit
- ☒ 8-bit PG#210

Four 8-bit numbers separated by periods. Each 8-bit number can be 0 to 255

Q11#: Today's fastest computer can do of calculations in a second.

- ☐ Thousands
- ☐ Billions
- ☒ Trillions
- ☐ Millions



Q12#: If the calling function is a part of a JavaScript statement then the definition of this function will must have the\_\_\_\_\_ Statement.

- ☐ Break
- ☐ Terminate
- ☒ return
- ☐ Switch

Q13#: The organizations using the network organizational model have \_\_\_\_\_structure.

- ☒ Simple
- ☐ Complex
- ☐ Flexible
- ☐ Accurate

Q14#: In Relational Database table columns are called\_\_\_\_\_.

- ☐ Records
- ☐ Values
- ☒ Fields [Click here for detail](#)
- ☐ Unions

A relational database organizes data in *tables* (or *relations*). A table is made up of rows and columns. A row is also called a *record* (or *tuple*). A column is also called a *field* (or *attribute*).

Q15#: To store rounded number of 8.6 in a variable called "r\_\_number", We write \_\_\_\_\_.

- r\_number=Maths.round(8. 6);
- r\_numbers=Maths.rounds(8. 6);
- r\_number=Math.rounds(8. 6);
- r\_number=Math.round(8. 6); [Click here for detail](#)

To store the rounded number of 8.6 in a variable called "r\_number":

```
r_number=Math.round(8.6)
```

Q16#: \_\_\_\_\_ refers to DoS attack.

- Overburdening of the system [Click here for detail](#)
- Theft of data
- Corruption of data
- Modification of data

Denial-of-Service attacks (DoS attacks) are cyber-attacks on organizations and online services. A DoS attack consists of overburdening or overloading the normal capacity of systems, online services and/or the infrastructure with data traffic. This disrupts or limits the availability of the online services and related infrastructure for legitimate data traffic



Join our Facebook Group

**CS101 - Introduction to Computing VU**  
**Group for All subjects**

دنیا میں سب سے مشکل کام اپنی اصلاح اور سب سے آسان کام دوسروں پر نکتہ چینی کرنا ہے

Q17#: JavaScript's response against the user-initiated events is called\_\_\_\_\_.

- Object detection
- Boolean logic
- Opacity setting
- **Event handling** [click here for detail](#)

JavaScript's response to one of these user-initiated events is called event handling.

Q18#: Which of the following is not an Operating System?

- DOS
- Windows XP
- Linux
- **MS Access** [click here for detail](#)

All are operating system but Microsoft Access, also known as Microsoft Office Access, is a database management system.

Q19#: Complex Software development process requires the developers to follow some specific set of rules and guidelines which can be termed as

- Object Oriented Software
- **Design Methodology** PG#131
- Programming Language
- Object Based Design

#### **Design Methodology?**

The set of (often flexible) rules and guidelines a team of developers follow to construct reasonably complex SW systems

Q21#: Graphics creation in JavaScript is\_\_\_\_\_.

- Easy
- Difficult
- Simple
- Not Possible      PG#246

**Problems & Solutions:**

JavaScript doesn't support drawing of graphics

Q22#: The floppy disk was introduced in the market by\_\_\_\_\_.

- Hewlett Packard
- IBM
- Intel
- Yoshiro Nakamats      PG#14

**Floppy Disk – 1950**

Invented at the Imperial University in Tokyo by Yoshiro Nakamats

Q23#: By studying the history of spreadsheet software, we come to know that \_\_\_\_\_was the first spreadsheet Software.

- MS Excel
- penOffice.org Calc
- LibreOffice Calc
- VisiCalc      PG#83

A spreadsheet - VisiCalc - was the first popular application on PC's.



Q24#: Which of the following cannot be considered as a property of image object:

- ☐ hspace
- ☐ height
- ☐ onLoad PG#286
- ☐ lowsrc

Image

Properties: name, border, complete, height, width, hspace, vspace, lowsrc, src

Q25#: A website resides over\_\_\_\_\_

- ☐ PDA
- ☐ WWW
- ☐ Browser
- ☐ CPU

Q26#: The\_\_\_\_\_ has considerably changed the way of marketing forever, redirecting it from a mass Focus to a single person focus.

- ☐ Television
- ☐ Web PG#281
- ☐ Mobile
- ☐ Radio

The Web has changed marketing forever, redirecting it from a mass focus to a single-person focus

Q27#: A software on a user's computer, acting as an interface between the user and internet is called as a\_\_\_\_\_.

- Browser
- PowerBuilder
- Front Page
- Navigator

### **Browser**

A browser is an application program that provides a way to look at and interact with all the information on the World Wide Web.

Q28#: Software Development Process involves working of different teams but \_\_\_\_\_team has its Major contribution in a project after the designing phase.

- QA
- Architect
- Development
- HR

Q29#: Client is the basic entity in software development. It is the responsibility \_\_\_\_\_of to manage the client's matters.

- Project Manager
- Team Lead
- Developer
- Quality Assurance Engineer

Q30#: Notepad is an example of\_\_\_\_\_

- ☐ System Software
- ☐ Application Software
- ☐ Device Driver
- ☐ Kernal

Q31#: Which of the following is not a peripheral device for a computer?

- ☐ USB
- ☐ Printer
- ☐ Scanner
- ☐ Power Supply Unit [Click here for detail](#)

Q32#: There are some primary colors which are the base of other colors. Select which of the following is not a primary Color.

- ☐ Red
- ☐ Blue
- ☐ Yellow PG#235
- ☐ Green

In a popular scheme – the RGB scheme – each part of the triplet represents the intensity of one of out of three primary colors: red, green, blue

Q33#: Concatenate Operator in JavaScript is used to \_\_\_\_\_elements.

- ☐ Subtract
- ☐ Multiply
- ☐ Join
- ☒ Add

Q34#: Computer display is composed of a regular grid of

- ☐ bits
- ☐ bytes
- ☐ sectors
- ☒ pixels PG#235

Most all computer displays consist of a grid of tiny pixels arranged in a regular grid of rows and columns

Q35#: \_\_\_\_\_is a container that holds a single value.

- ☐ Array
- ☒ Variable PG#199
- ☐ Function
- ☐ Set

A variable is a container that holds a value



Q36#: Today' computers are based on the technology of \_\_\_\_\_.

- Punch cards
- Vacuum tubes
- Transistors
- Resistors

Q37#: The memory size of the Altair 8800 was

- 128 bytes
- 256 bytes
- 128 Kilo bytes
- 256 Kilo bytes

Altair 8800. The price was \$375, contained 256 bytes of memory (not 256k),but had no keyboard, no display, and no auxiliary storage device.

Q38#: Unlike virus, \_\_\_\_\_is called stand-alone program.

- Trojan horse PG#278
- logic bomb
- Worm
- time bomb

### Trojan Horses

- Unlike viruses, they are stand-alone programs

Q39#: \_\_\_\_\_wait for some time and then launch a function

- Timeout( )
- setTimeout( ) PG#290
- setTime( )
- setTimeIn( )

setTimeout( ) executes *circulate( )* once after a delay of *gap* milliseconds

Q40#: Planning and tracking of the project is the responsibility of the\_\_\_\_\_.

- Project Manager PG#296
- Architect
- Developer
- Chief Executive Officer

#### Project Manager

##### • Responsibilities:

- Planning and tracking of the project
- Arranging of the appropriate resources
- Client relationship management

کسی انسان کی خوبی کو پچھانوں اور اسے بیان کرو، لیکن اگر کسی کی  
خامی مل جائے تو یہاں تمہاری خوبی کا امتحان ہے۔  
فرمان حضرت علیؓ

Q41#: \_\_\_\_\_ team is responsible for a project after the specification's stage till the very end.

- Executive
- Architect
- Development PG#296
- HR

#### Development Team

- The number of development teams has varied between 3-7 at this organization
- Team-size has varied between 3-35
- Large teams are organized as a collection of sub-teams
- Lowest-level team: No more than 7 members
- Responsible for a project from after the specifications stage till the very end

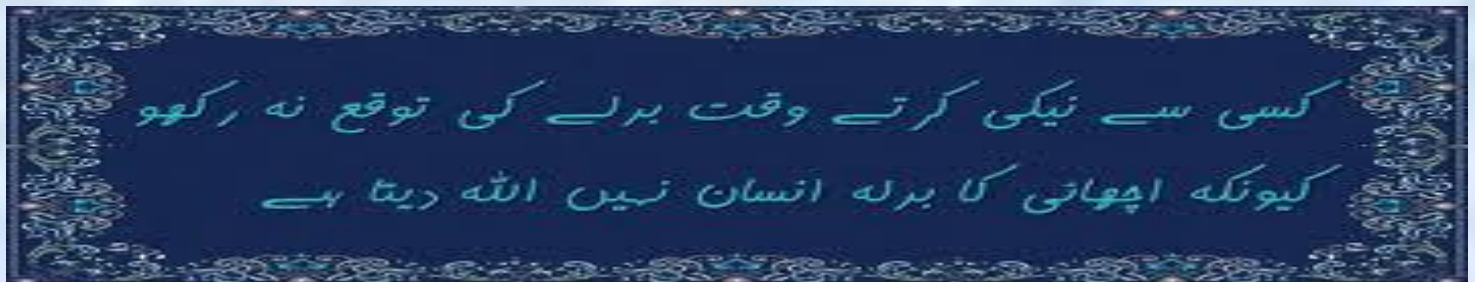
Q42#: Client relationship management is the responsibility of \_\_\_\_\_.

- Team Lead
- Project Manager PG#296
- Developer
- Quality Assurance Expert

#### Project Manager

##### • Responsibilities:

- Planning and tracking of the project
- Arranging of the appropriate resources
- Client relationship management



Q43#: Name, Border, Source are the\_\_\_\_\_ of the image object.

- ☐ Event Handler
- ☒ **Properties**     **PG#286**
- ☐ Methods
- ☐ none of the given options

Properties: name, border, complete, height, width, hspace, vspace, lowsrc, src

Q44#: TCP stand for\_\_\_\_\_.

- ☐ Transfer Center protocol
- ☒ **Transmission Control Protocol**     **PG#317**
- ☐ Transmission Center Protocol
- ☐ Telephone Center Protocol

**Language of the Internet: TCP/IP**

Transmission Control Protocol/Internet Protocol

**FINAL TERM EXAMINATION**  
**Spring 2013**

Q45: Which of the following is not a type of page margin in MS Word?

- ☐ Left
- ☐ Right
- ☒ **Center**     [Click here for detail](#)
- ☐ Top



Q46: Command which saves the selected text before deleting is\_\_\_\_\_.

- ☒ Copy
- ☐ Delete
- ☐ Cut
- ☐ undo

Q47: Select the best option to create and edit the HTML pages.

- ☐ Ms Paint, adobe Photoshop
- ☒ Notepad, Ms Front page
- ☐ Netscape, Monzilla
- ☐ Ms excel, Ms outlook

Q48: how many bits are there in one byte?

- ☒ 8 bits    PG#42
- ☐ 10 bits
- ☐ 12 bits
- ☐ 16 bits

**Byte = 8 bits**

Q49: \_\_\_\_\_ is the essential property of every JavaScript object.

- ☐ Color
- ☐ Width
- ☐ Name
- ☐ Size PG#142

An object has *properties* – e.g. a window has size, position, status, etc.

Q50: which one of the following is the correct code syntax in JavaScript?

- ☐ SetTimeout()
- ☐ setTimeout()
- ☐ setTimeout() PG#290
- ☐ SettimeOut()

setTimeout( ) executes *circulate( )* once after a delay of *gap* milliseconds

Q51: \_\_\_\_\_ is a programming language which was specifically designed to develop business applications.

- ☐ BASIC
- ☐ FORTRAN
- ☐ COBAL [Click here for detail](#)
- ☐ Perl

COBOL (/ˈkɒbəl/) is a compiled computer programming language designed for business use

Q52: \_\_\_\_\_ Converts the source code written in high level language into machine language.

- Utilities
- Drivers
- **Language Translator**      **PG#59**
- System software

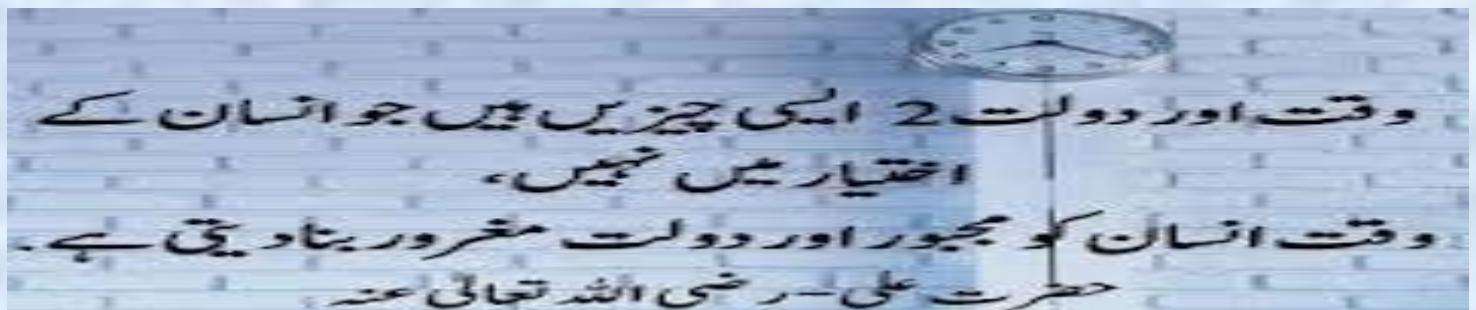
### Language Translators

Human programmers write programs in a language that is easy to understand for them. They use language translators to convert that program into machine language. It converts the human understandable code in uPs understandable code, i.e. a language that is easy to understand for the uPs

Q53: \_\_\_\_\_ tells the capacity of any array in terms of storing values.

- Index
- **Length**      **PG#178**
- Type
- Name

The key property of the 'Array' object is 'length', i.e the number of elements in an array



**Q54:** If you want to assign an IP address to your computer, you can use any number from in each part of IP address.

- ☐ 1 to 255
- ☒ 0 to 255      **PG#210**
- ☐ 0 to 256
- ☐ 1 to 256

#### **IP Address**

A unique identifier for a computer on a TCP/IP network

Format: four 8-bit numbers separated by periods. Each 8-bit number can be 0 to 255

**Q55:** select the best characteristic of telnet.

- ☐ It is used to send email
- ☒ It is used to login remotely      **PG#211**
- ☐ It is receive to email
- ☐ It is used to read online news

#### **Telnet Protocol**

Using Telnet, a user can remotely log on to a computer (connected to the user's through a TCP/IP network, e.g. Internet) & have control over it like a local user, including control over running various programs



**Join our Facebook Group**

**CS101 - Introduction to Computing VU  
Group for All subjects**



**Q56:** \_\_\_\_\_ provides the facility of searching and downloading the new e-mail messages to an e-mail client.

- HTTP
- POP3 PG#213
- TCP
- FTP

eMail client interacts with the POP3 server for discovering and downloading new eMail messages

The message is prepared using the eMail client

**Q57:** which of the following is the instant Message service available on the internet?

- HTTP
- IE
- AIM PG#235
- FTP

**Instant Messaging:**

The IM services available on the Internet (e.g. ICQ, AIM, MSN Messenger, Yahoo! Messenger) allow us to maintain a list of people (contacts) that we interact with regularly. We can send an instant messages to any of the contacts in our list as long as that contact is online.



**Q58:** Which event handler executes the specified JavaScript code when a window / form element loses focus?

- ☐ onLoad
- ☐ onUnload
- ☒ onBlur PG#245
- ☐ onFocus

onBlur executes the specified JavaScript code when a window loses focus or a form element loses focus

**Q59:** \_\_\_\_\_ can be used in JavaScript to open multiple popup Windows when a particular web page is opened.

- ☐ onAbort
- ☐ onchange
- ☒ onLoad PG#232
- ☐ onUnload

onLoad can be used to open multiple Windows when a particular document is opened

**Q60:** For good presentation and better visibility of text, we should use \_\_\_\_\_ background color in each slide.

- ☐ Light
- ☒ Dark PG#222
- ☐ Faded
- ☐ Transparent

**Slide Background:**

Keep the backgrounds simple. You want a background that shows off your info, not one that makes it illegible

Avoid bright background colors. Light colored text against a dark background works best

**Q61:** If one operand of “+operator “is a string and the other one is a non string, then JavaScript.

- ☐ Produce an error message
- ☐ Converts the non string to string
- ☐ Concatenates the string and non string
- ☒ Performs both conversion and concatenation PG#272

When one operand is a string, and the other is not, the non-string will first be converted to a string and then the two strings will be concatenated

**Q62:** JavaScript fixed() function has equivalent HTML tag-set \_\_\_\_\_.

- ☐ <P>.....</P>
- ☐ <U>.....</U>
- ☒ <PRE>.....</PRE> PG#270
- ☐ <H>.....</H>

fixed( ) <PRE> ... </PRE>

**Q63:** There are some primary colors which are the base of other colors. Select which of the following is not a primary color.

- ☐ Red
- ☐ Blue
- ☒ Yellow PG #235
- ☐ Green

In a popular scheme – the RGB scheme – each part of the triplet represents the intensity of one of out of three primary colors: red, green, blue

**Q64:** \_\_\_\_\_ are those programs in which the flow of the program is determined by the user's actions (mouse click, key presses) or message from other programs.

- Event called programs
- Event processed programs
- **Event driven programs**
- Event declared programs

### **Event-Driven Programs**

Examples: GUIs, microwave, camera

The system sends events to the program and the program responds to these as they arrive.

Events can include things a user does - like clicking the mouse - or things that the system itself does - like updating the clock.

**Q65:** In the early days \_\_\_\_\_ were used to store data.

- Access files
- Database files
- **Flat files**      **PG#260**
- Excel files

### **In the very, very old days ...**

• Even large amounts of data was stored in text files, known as *flat-file databases*



**Join our Facebook Group**

**CS101 - Introduction to Computing VU  
Group for All subjects**



Q66: In the context of intelligent systems, softbots is also termed as \_\_\_\_\_.

- Mobile phone
- Autonomous web agent PG#244
- Any wireless device
- SIM card

**Autonomous Web Agents:**

Also known as mobile agents, softbots

Q67: Working of any system depends upon its various components. Which component, a Rule Based system (intelligent system) would not have?

- Rule interpreter
- Rule compiler PG#242
- Rulebase
- Working memory

**Rulebased Systems (1):**

Based on the principles of the logical reasoning ability of humans

Components of an RBS:

Rulebase

Working memory

Rule interpreter



Join our Facebook Group

**CS101 - Introduction to Computing VU**  
**Group for All subjects**

**Q68:**Using a software without the author's permission is called

- Ip spoofing
- **Software privacy**    **PG#276**
- Mail bombing
- DoS Attack

### **Software Piracy**

•Using a piece of SW without the author's permission or employing it for uses not allowed by the author is SW piracy

**Q69:** In 2000, yahoo servers were attacked by Dos attack, it took...\_\_\_\_\_ To recover from this attack

- 1 hour
- 2 hour
- **3 hour**                      [Click here for detail](#)
- 4 hour

In the year 2000, February 7 when yahoo servers were crashed. The famous internet site was unavailable for Several hours this affected the business of yahoo considerably. Buy.com, e-bay and CNN were The other giant companies that were attacked, the very next day after yahoo. The site was completely inaccessible which Incurred huge loss to the company. **The downtime was calculated as three hours for yahoo** and The other websites were down for several more hours.



**Join our Facebook Group**

**CS101 - Introduction to Computing VU  
Group for All subjects**

Q70: We know a virus is a combination of two parts, \_\_\_\_\_.

- Header and payload
- Payload and data
- Header and transmission mechanism
- **Payload and transmission mechanism**      **PG#277**

#### **Anatomy of a Virus**

- A virus consists of 2 parts:
- Transmission mechanism
- Payload

Q71: For creating 2-d animations,\_\_\_\_\_will be the more appropriate choice.

- Flash
- HTML image class
- Web Browser
- **HTML 2D Class**

Q72: Which attribute of the image tag in HTML is used to mention the source of an image?

- Source
- Path
- **Src**      **PG#285**
- Loc

**<IMG> tag**

Format: **<IMG src=URL, alt=text height=pixels width=pixels align="bottom/middle/top">**

Q73: The task performed to determine the existence of defects in a program is called \_\_\_\_\_.

- Bug fixing
- Debugging
- Testing PG#311
- Defect killing

#### Testing & Debugging

- *Testing*: The tasks performed to determine the existence of defects
- *Debugging*: The tasks performed to detect the exact location of defects

Q74: There are \_\_\_\_\_ types of errors in a program.

- 1
- 2
- 3 PG#312
- 4

#### Types of Errors

- Syntax errors
- Semantic errors
- Run-time errors

### سنہری حروف

اپنی سوچ کو پانی کے قطروں سے بھی زیادہ شفاف رکھو  
کیوں کہ جس طرح قطروں سے دریا بنتا ہے  
اسی طرح سوچوں سے ایمان بنتا ہے۔۔۔

(حضرت علی)



Q75: The information technology has three core areas \_\_\_\_\_.

- Telecom engineering, electrical engineering, computer science
- Telecom engineering, computer engineering, computer science PG#295
- Telecom engineering, computer engineering, database engineering,
- Telecom engineering, computer engineering, hardware engineering,

### Information technology

Telecom Engineering

Computer Engineering

Computer Science

Q76: \_\_\_\_\_ routes the packets through the internet to go to their destination.

- Telnet
- TCP
- IP pg#317
- NIC

IP routes these packets through the Internet to get them to their destination

Q77: Which of the following hardware components is the most important for the operations of database management system?

- High resolution video display
- Printer
- High speed, large capacity storage media [Click here for detail](#)
- plotter

**Q78:** Which one of the following will not be considered as the use of word processor?

- Composing magazines
- Writing memos
- **Writing research reports**
- Making ledgers

**Q79:** Complex software development process requires the developers to follow some specific guidelines which can be termed as\_\_\_\_\_.

- Object Oriented software
- **Design Methodology**      **PG#131**
- Programming language
- Object Based Design

**Q80:** Highest bandwidth of channel can be up to:

- **Tb/s**      **PG#190**
- Kb/s
- Mb/s
- Gb/s

**Bandwidth**

Capacity of a communication channel for carrying data

Measured in bits/s (bps), kb/s, Mb/s, Gb/s, Tb/s

Optical fiber channels have the highest (1 Tb/s)

**Q81:** By the history of spreadsheet software, we come to know that \_\_\_\_\_ was the first spreadsheet software.

- Ms Excel
- OpenOffice.org Calc
- libreOffice Calc
- VisiCalc PG#83

A spreadsheet - VisiCalc - was the first popular application on PC's.

**Q82:** Unlike a program with a syntax error, a program with a \_\_\_\_\_ error is valid program in the language, though it does not behave as intended.

- Run time
- Syntax
- Semantic [click here](#) PG#312([click here to see semantic is also called logic error](#) )
- Special

Unlike a program with a syntax error, a program with a logic error is a valid program in the language, though it does not behave as intended. The only clue to the existence of logic errors is the production of wrong solutions.

**Q83:** The program which was first computed on world's first computer was:

- Simple sequence
- Multiple sequence
- Bernoulli's sequence PG#9
- Increasing sequence

A program for computing the Bernoulli's sequence on the Analytical Engine - world's 1st computer program

**Q84:** RAM stand for:

- Real alter memory
- Random associated memory
- **Random access memory** PG#24
- Real associated memory

**RAM**

RAM (random access memory)

**Q85:** The world first communication network was:

- WAN
- **ARPANET** [Click here for detail](#)
- Intranet
- LAN

Advanced Research Projects Agency Network (ARPANET) was one of the world's first operational switching networks, the first network to implement TCP/IP, and the progenitor of what was to become the global Internet.

**Q86:** HTML stands for . . .

- Hyper Transfer Markup Language
- Hyper Text Makeup Language
- **Hyper Text Markup Language** PG#28
- Hyper Transfer Making Language

**HTML**

**Hyper Text Markup Language**



Q87: Information available on the web is:

- Mostly free of cost [Click here for detail](#)
- Costly
- Totally
- Not accessible at all

information sources on the web, available free of charge

Q88: SCSI stands for:

- Small computer system interface PG#28
- System common small integration
- Silicon computer system interface
- None of the given choice

SCSI

Small Computer System Interface.

Q89: In HTML, which tag is used for the highest level heading?

- <h5> </h5>
- <h2> </h2>
- <h1> </h1> [Click here for detail](#)
- <title> </title>

The h1 element is used to indicate the most important (or highest-level) heading on the page.

Q90: Integrated circuit can be classified into

- ☐ Analog
- ☐ Digital
- ☒ Both PG#31
- ☐ None of the above

### Integrated Circuits

Integrated circuits can be classified into analog, digital and mixed signal (both analog and digital on the same chip).

Q91: \_\_\_\_\_ has slots to contain the different PCI cards

- ☐ Memory Bus
- ☐ System Bus
- ☒ Mother Board PG#27
- ☐ CPU

The slot on the motherboard

Q92: ENIAC was the first \_\_\_\_\_ computer.

- ☐ Large-Scale
- ☐ General-Purpose
- ☐ Electronic
- ☒ All of the given choice

Q93: Attribute/Attributes of the good application software is are:

- Easy to install
- User interface
- Consistent
- All of the above PG#85

**Attributes of Good Application Software**

Easy to install, un-install

User Interface

Consistent

Intuitive

Configurable

Adapts to the users need

Has a tutorial and a complete help manual

Does not have any critical bugs

Q94: \_\_\_\_\_ interact directly with the user.

- Device drivers
- System software
- Application software PG#85
- Kernel

Application software are programs that interact directly with the user for the performance of a certain type of work

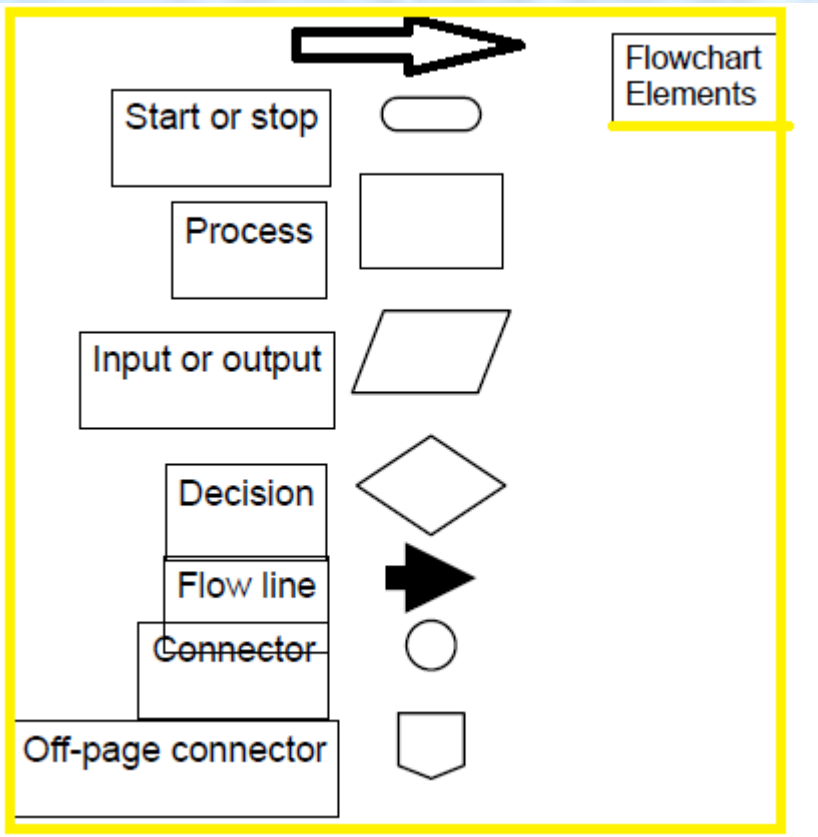


**Join our Facebook Group**

***CS101 - Introduction to Computing VU  
Group for All subjects***

Q95: Which of the following not a flow chart element?

- Off-frame connector PG#105
- Input or output
- Process
- connector



کوشش کرو کہ تم دنیا میں رہو، دنیا تم میں نہ رہے  
کیونکہ کشتی جب تک پانی میں رہتی ہے خوب تیرتی ہے  
لیکن جب پانی کشتی میں آ جاتا ہے تو وہ ڈوب جاتی ہے  
حضرت علیؓ



Q96: Detail plan of SW life cycle specifies two things that are the \_\_\_\_\_

- Requires resources and expected cost
- Expected cost and budget
- Required resources and expected deliverables PG#136
- Time and cost

Detailed plan specifying  
the required resources  
and expected  
deliverables

Q97: In \_\_\_\_\_, a system is designed by fitting together a collection of independent and self-contained components.

- Structured design
- Component design
- Object oriented design PG#131
- None of above

### Object Oriented Design

The over-all system is put together by fitting together a collection of these components.

جو شخص یہ چاہے کہ اس کی زندگی کامیابی سے بسر ہو وہ اپنے باپ  
کے بعد اس کے دوستوں نے نیک سلوک کرے۔ !!!

حضرت عمر فاروقؓ

Q98: Core tasks of an OS are:

- Processor management
- User interface
- Storage management
- All of the given PG#65

**Core Tasks of an OS**

Processor management  
Memory management  
Device management  
Storage management  
Application Interface  
User Interface

Q99: Linux is \_\_\_\_\_ type of operating system

- Single user
- Multi user
- Distributed
- None of the given

” گفتگو ایسی چیز ہے۔  
” جسکی وجہ سے انسان یا تو دل میں اتر جاتا ہے یا پھر دل سے اتر جاتا ہے۔“

Q100: Algorithm is a precise sequence of limited number of \_\_\_\_\_ , \_\_\_\_\_ steps that terminates in the form of a solution

- Ambiguous, Executable
- Nondeterministic, Finite
- Finite, countable
- Unambiguous, executable PG#100

*A precise sequence of a limited number of unambiguous, executable steps that terminates in the form of a solution*

## 2011 to 2014 Sessions Daily Base Quizzes

Q101: Decompose the problem into subsystem and define their relationships is done in \_\_\_\_\_ phase.

- User requirement PG#137
- Planning
- Integration testing
- Detailed design

**Architecture: Decompose the problem into subsystems and define their relationships**

**Q102:** Which attribute/attributes will we use to limit the capacity of text box to 20 characters?

- **Maxlength="20" PG#74**
- Length="20"
- Size="20"
- All of the above

**Maxlength="limitInCharacters"**

**Q103:** \_\_\_\_\_ is a type of computer-to-computer messaging.

- TCP
- Telnet
- **E-mail PG#213**
- FTP

**email**

Computer-to-computer messaging

Inexpensive, and quite quick, but not instant!

**Q104:** Suppose you are the presenter and you want audience in touch during presentation then what will you do?

- Write long sentences on slides
- Keep same color for the background and text
- **Use of videos , animation and sounds**
- Using very small font size



**Q105:** Whenever a contact in our list comes online, who informs us through an alert message and by playing a sound?

- ☐ IM server
- ☒ IM client PG#215
- ☐ Client
- ☐ Server

**Using Instant Messaging**

Whenever a contact in our list comes online, the IM client informs us through an alert message and by playing a sound

**Q106:** One can run program on a remote computer using the \_\_\_\_\_ protocol.

- ☐ SMTP
- ☒ TELNET PG#185
- ☐ FTP
- ☐ None of the given choices

Can run a program on a remote computer using the 'TELNET' protocol

**Q107:** Arguments values are passed to the function \_\_\_\_\_

- ☐ By value
- ☐ By reference
- ☒ Both a & b PG#201
- ☐ None of the given

Arguments values are passed to the function by value (some popular languages pass arguments 'by reference' as well)

Q108: \_\_\_\_\_ Loop is flow control statement that allows code to be executed repeatedly based on a given Boolean condition.

- For
- Do-While
- If-else
- While [Click here for detail](#)

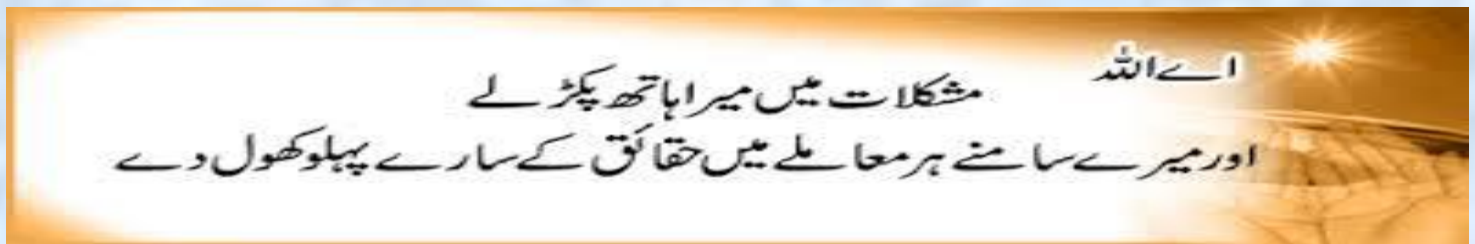
A **while loop** is a control flow statement that allows code to be executed repeatedly based on a given boolean condition

Q109: Two or more computers connected together so that they can share information and resources are termed as:

- Computer networks PG#185
- Computer protocols
- Network topologies
- None of the above

### Computer Network

Multiple computers that are connected together to share information and other Resources



Q110: In \_\_\_\_\_ TCP\IP protocols became the only set of protocols used on the ARPANET.

- ☐ 1973
- ☒ 1983 PG#196
- ☐ 1972
- ☐ None

**1983** - The TCP/IP protocols becomes the only set of protocols used on the ARPANET

This sets a standard

Q111: In 1983, which protocols became the only set of protocols used on the ARPANET?

- ☐ UDP/IP
- ☒ TCP/IP PG#196

**1983** - The TCP/IP protocols becomes the only set of protocols used on the ARPANET

This sets a standard



Join our Facebook Group

**CS101 - Introduction to Computing VU**  
**Group for All subjects**

معاشرہ پر تمہارا اس سے بڑا احسان اور  
کوئی نہیں ہو گا کہ تم خود دستور جاؤ۔

Q112: SMTP stands for \_\_\_\_\_.

- Simple Mail Transfer Protocol PG#213
- Simple Mail Transparent Protocol
- Simple Mail Transfer Paradigm
- None of these

**SMTP: Simple Mail Transfer Protocol**

A protocol used to send and receive eMail messages over a TCP/IP network

Q113: The system that manages relational database is called

- Database Management System
- Data Management System
- Relational Database Management System
- Flat-File System

Q114: One of the disadvantages of working at home is \_\_\_\_\_

- Family life may be happier because of living at home
- Family life may suffer as well , as some never turn off , and keep on working through out the day, evening an night
- Family life may happier because he can give more time to his family.
- There is no disadvantage of working at home.



Q115: Network Organization \_\_\_\_\_ so that network organization works effectively to meet the business goals the organization.

- Shares knowledge
- Decentralizes the control of the operation
- Shares knowledge and decentralizes the control of the operation PG#281
- Shares knowledge and Centralizes the control of the operation

#### Network Organization

It shares knowledge and decentralizes the control of the operation so that network works effectively to meet the business goals of the organization

Q116: Infection propagation and Actual destructive are the components of \_\_\_\_\_

- Transmission mechanism
- Payload PG#277
- Worms
- Trojan Horse

#### Payload

- The part of the virus that generally consists of malicious computer instructions
- The part generally has two further components:
  - Infection propagation component:
  - Actual destructive component:
- This component transfers the virus to other files residing on the computer
- This component destroys data or performs or other harmful operations



Q117: When web server is busy it gives a message to user \_\_\_\_\_

- Time out
- Waiting
- **Server Busy**
- Server Unavailable

Q118: \_\_\_\_\_ provides software tools needed to organize & manipulate the data in a flexible manner.

- Data Base
- **DBMS PG#254**
- Data Mining
- File system

A DBMS takes care of the storage, retrieval, and management of large data sets on a database

It provides SW tools needed to organize & manipulate that data in a flexible manner



Q119: A property that gives the values of Pi is:

- ☐ PI()
- ☐ Graph. PI
- ☒ Math.PI PG#248
- ☐ Math.PI()

**Properties:**

Math.PI  
Math.E  
Math.LN2  
Math.LN10  
Math.LOG2E  
Math.LOG10E  
Math.SQRT2  
Math.SQRT1\_2

Q120: There are \_\_\_\_\_ popular schemes to reduce the number of bytes that are required for storing graphics.

- ☐ 4
- ☐ 3
- ☒ 2 PG#235
- ☐ None of these

A number of clever schemes have been invented to reduce the number of bytes that are required for storing graphics. 2 popular ones:

Color mapping  
Dithering

Q121: Databases consisting of two or more related tables are called \_\_\_\_\_

- Databases
- Relational Databases PG#262
- RDBMS
- Flat-Files

#### Relational Databases

• Databases consisting of two or more related tables are called *relational databases*

Q122: COO stands for

- Chief operational office
- Chief operating officer PG #298
- Chief operational order
- None of the above

COO – Chief Operating Officer

Q123: Utility software is type of \_\_\_\_\_ Software

- System [Click here for detail](#)
- Application
- Both a & b
- None of the given

Utility software is system software designed to help analyze, configure, optimize or maintain a computer.



Q124: With the help of FTP we can:

- List, change, create folders on remote computes
- Upload and download files
- Transferring web content from the developer's PC to the web server
- All of the given choices PG#210 and 211

**FTP: File Transfer Protocol**

Used to transfer files between computers on a TCP/IP network (e.g Internet)

Simple commands allow the user to:

List, change, create folders on a remote computer

Upload and download files

Typical use: Transferring Web content from the developer's PC to the Web server

Q125: The user's & the contact's IM clients are ready to communicate directly, this communication is called:

- Peer-to-peer PG#217
- Client-server
- Peer-to-peer
- Ad hoc network

Now the user's & the contact's IM clients are ready to communicate directly (P2P)

دنیا میں سب سے مشکل کام اپنی اصلاح اور سب سے آسان کام دوسروں پر نگتہ چینی کرنا ہے

Q126: Events can be captured in the HTML code, and then directed to a JavaScript \_\_\_\_\_ for an appropriate response

- BODY TAG PG#228
- HANDLER
- FUNCTION
- EVENT

Events can be captured and responded to directly with JavaScript one-liners embedded in HTML tags in the BODY portion

Q127: The cyberwarefare is a \_\_\_\_\_

- Crime
- War
- Software
- Game

Q128: The message is prepared using:

- e-mail client PG#213
- SMTP server
- POP3 server
- All of the given choices

The message is prepared using the eMail client

**Q129:** Which of the following is used to attain something productive as opposed to games or entertainment software's?

- System software
- **Application PG#61**
- Programing software
- Productive software

**Q130:** Programs(s) used for writing, sending, receiving, and displaying E-mail message are:

- SMTP server
- **E-mail client PG#213**
- POP3 server
- All of the given choices

#### **eMail Clients**

Programs used for writing, sending, receiving, and displaying eMail messages

Examples: Outlook, Communicator, Hotmail, YahooMail

**Q131:** Spreadsheet is a collection of cell arranged in \_\_\_\_\_

Rows

Columns

**Both of the given PG#83**

None of the given

#### **Spreadsheet SW (2)**

Consist of cells arranged in rows and columns

Each cell may contain numeric values, text or formulas

Automation

Recalculations

Charts

Q132:What would be the html code for the given display: 1.circle 2.square

○ <ul start = "1">

<L1> circle </L1>

<L1> square</L1>

○ <ol>

<L1> circle</L1>

<L1> square</L1>

PG#52

○ <ul >

<L1> circle</L1>

<L1> square</L1>

○ <ol begin = "1">

<L1> circle </L1>

<L1> square </L1>

بري صحبت سے تھائی بہتر ہے اور تھائی سے نيك صحبت بہتر ہے



Q133: Which of the following can NOT be contained in interactive forms?

- ☐ Text box
- ☐ Check box
- ☒ For loop PG#69
- ☐ Radio button

### Interactive Forms (3)

Are GUI-based

May contain:

Text fields

Check boxes

Buttons

Scrollable lists

Q134: Vector graphics are also called Raster graphics.

- ☐ True
- ☒ False

Q135:\_\_\_\_\_ can store both data and addresses.

- ☐ Data registers
- ☐ Vector Registers
- ☒ General Purpose Registers PG#35
- ☐ Special purpose Registers

**General Purpose registers** can store both data and addresses.

Q136:For writing a letter we can use \_\_\_\_\_

- MS Paint
- MS Word PG#62
- MS Excel
- Corel Draw

MS Word. Individuals use it and so do many large corporations. It is used for writing one-page letters and also to typeset books

Q137:Digital computers possess two natural states \_\_\_\_\_ and \_\_\_\_\_

- On & on
- On & off PG#42
- Off & off
- None

The fundamental building block of a digital computer – the switch – possesses two natural states, ON & OFF.

Q138: Which of the following are an essential HTML tags required in all web pages.

- <HTML>,<BODY>,<HEADING>
- <HTML>,<HEAD>,<H1>
- <HTML>,<HEAD>,<BODY>
- <HTML>,<HEAD>,<BODY>,<HEADING>

Q139: Which attribute is used to submit a HTML form to a specified hyper link?

- Method PG#71
- Action
- Name
- None of the given

**method:** Forms can be submitted through two alternate methods – GET & POST

Q140: MS word is an example of \_\_\_\_\_.

- Shrink wrapped software PG#62
- Custom built software
- Specific purpose software
- Trialware software

**Shrink-Wrapped SW**

SW built in such a way that it is useful for many different users in many different ways.

Example: MS Word.



ایماندار کو غصہ دیر سے آتا ہے اور جلدی دور ہو جاتا ہے

Q141: Which one of the following web programming languages is used to do client-side scripting?

- ☐ ASP
- ☐ Server Side JavaScript
- ☐ PHP
- ☒ VBScript PG#95

We'll use JavaScript to do client-side scripting. However, there are many other languages that can be used for that purpose, e.g. VBScript

Q142: Microphone is an example of . . . . . devices

- ☐ Output
- ☒ Input PG#23
- ☐ Storage
- ☐ None of the above

**Input Devices:** Mouse, Keyboard, Joystick, Digital Camera, Microphone, Scanner

Q143: Which one of the statement is true about JavaScript language?

- ☐ JavaScript is an interpreted language
- ☐ JavaScript supports event-driven programming
- ☐ JavaScript is object-based
- ☒ All of the given PG#96

JavaScript:

Is an interpreted language

Supports event-driven programming

Is object-based



Q144:\_\_\_\_\_ Cache memory placed on a separate chip from microprocessor.

- L1
- L2      PG#34
- Both
- None of the above

L2, cache memory, which is on a separate chip from the microprocessor but faster to access than regular RAM.

Q145:The best strategy used for complex Boolean operation is called . . . . .

- Brute-force
- Greedy Algorithm
- Divide and conquer      PG#45
- None of the above

Q146: Given the HTML code. <A HREF="<mailto:ahsan@vu.edu.pk>">[ahsan@vu.edu.pk](mailto:ahsan@vu.edu.pk)</A>

My email. Read the code carefully and tell what output browser will generate?

- [ahsan@vu.edu.pk](mailto:ahsan@vu.edu.pk)
- [ahasn@vu.edu.pk](mailto:ahasn@vu.edu.pk)
- my email [ahasn@vu.edu.pk](mailto:ahasn@vu.edu.pk)
- none of the given choices

زندگی میں کامیابی کا یہی راز ہے کہ پریشانیوں سے پریشان مت بنو

Q147: Which of the following is not an example of DTP (Desktop Publishing)?

- Adobe PageMaker
- Corel Ventura
- MS Publisher
- MS Word PG#88

**DTP: Requirements**

High-end PC with a large-screen monitor

Laser printer

Scanner

DTP SW

Examples:

Adobe PageMaker

QuarkXPress

Corel Ventura

MS Publisher

Q148: An HTML document is develop in a plain-text editor called . . . . .

- Nopade
- Notepad PG#83
- Textpad
- Editor

Web pages can be developed using a simple plain-text editor like the “notepad”, but more efficient, easy-to-use HTML editors can make the process quicker

جھوٹ انسان اور ایمان دونوں کا دشمن ہے

Q149: \_\_\_\_\_ is used for amplification, and has three terminals.

- Resister
- Diode
- Transistor PG#32
- Capacitor

The transistor is a solid state semiconductor device used for amplification and Switching, and has three terminals.

Q150: ROWSPAN is used to extend the current cell to some

- Columns
- Rows
- Both a & b
- None of the given

ROWSPAN

The number of columns the current cell should extend itself

Example: <TD ROWSPAN = "5">

Q151: When the if statement consist more than one statement then enclosing these statement in curly braces is,

Not required

Good programing

Relevant

Must

Q152: JavaScript treats everything which it manipulates as \_\_\_\_\_.

- Object PG#96
- Method
- Window
- Text

**Object Based?**

Everything that JavaScript manipulates, it treats as an *object*

Q153: Trialware software are used for

- Short period PG#63
- Long period
- Life time
- None of the given

**Trialware**

It is similar to shareware but difference is that the SW is usable for a short period only. When the period is expired, it is no more in use until the license is not purchased. The trial period may vary according to its developer. This period may range from a week to a few months.

It can be downloaded from the Internet or alternatively.

Q154: The process that can be used to solve a problem is termed as the \_\_\_\_\_

- Use case
- Protocol
- Algorithm PG#99
- Flow Diagram

The process that can be used to solve a problem is termed as the “algorithm”



Q155: \_\_\_\_\_ is an example of BIT-mapped type of Graphics & Animation software.

- MS Visio
- MS Paint PG#82
- Corel Draw
- Flash

#### Bit-mapped or raster graphics

Treats everything that is drawn as a bit-map

If an object is drawn on top of another, it is difficult to move just 1 of them while leaving the other untouched

Changing the resolution often requires considerable touch-up work

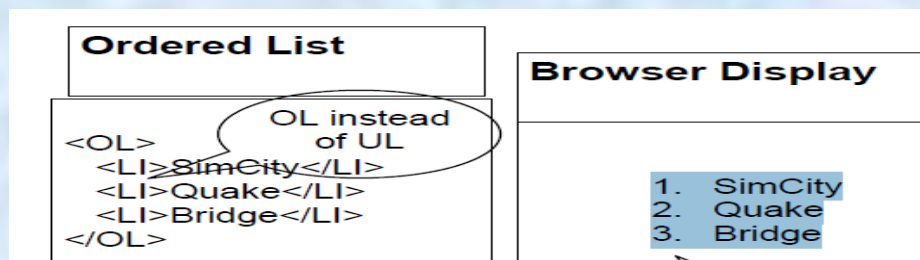
Relatively large file size

Example: MS Paint, Adobe Photoshop

Q156: If we want to show numbers with list items, then we use

- <UL>
- <OL> PG#53
- <DL>
- None of the given

In ordered list show numbers with list items



عقل مند کہتا ہے میں کچھ نہیں جانتا جبکہ بے وقوف کہتا ہے کہ میں سب کچھ جانتا ہوں

Q157: To select multiple options in a list we use \_\_\_\_\_ control.

- ☐ Radio button
- ☐ Check box
- ☒ Selection list
- ☐ Ordered list

Q158: Without \_\_\_\_\_, a web site is read only.

- ☒ Form PG#69
- ☐ Dialog box
- ☐ Button
- ☐ Scroll Bar

### Interactive Forms (1)

Without forms, a Web site is “read-only” – it just provides information to the user. Forms enable the user to provide information to the Web site. For example, the user can:

Perform searches on Web site

Give comments

Ask for info that is not available on the Website

Place order for goods and services

Q159: Choose the correct html to left-align the content inside a table cell:

- ☐ <tdleft>
- ☒ <td align = |left|>
- ☐ <td valign = |left|>
- ☐ <td leftalign>

Q160: Rules and regulations to communication in a network is called:

- LAN
- Protocol PG#185
- Hub
- None of the given choices

**Protocol**

–Rules governing communications over the network

Q161: The heuristic| programmers deliver the same number of Line of code| suggest that programmer should use

- The highest level language PG#169
- The lowest level language
- The middle level language
- Any programing language

We looked at the role of heuristics in architectural (or high-level) design

Q162: FTP was introduced in:

- 1972
- 1973 PG#197
- 1974
- 1976

**1973** - FTP (File Transfer Protocol) is introduced, standardizing the transfer of files between networked computers

Q163: Which of the following is True about |parseFloat(string)| function : I) if the first character cannot be converted to a number,parseFloat returns NaN. II) It returns the fractional portion of floating point number. III) Parses the string argument; returns a FP number. IV) None of the given options.

- ☐ I and II only
- ☐ II and III only
- ☒ I and III only PG#204
- ☐ IV only

1. Parses the string argument; returns an integer
2. If it encounters a non-numeral - anything other than (+,-) or (0-9) - it ignores it and all succeeding characters, and returns the integer value parsed up to that point
3. If the first character cannot be converted to a number, parseInt returns NaN
4. parseInt truncates numbers to integer values
5. Leading and trailing spaces are ignored

Q164: Avoid the use of motion for \_\_\_\_\_ purposes.

- ☒ Cosmetic PG#176
- ☐ Fashion
- ☐ Animation
- ☐ None of the given

#### Using Motion

Use motion to attract the viewer's attention

Avoid the use of motion for "cosmetic" purposes

**Success is defined by the user, not the builder**



Q165: A named collection of properties (data, state) & methods (instructions, behavior ) is called

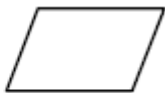
- Object      PG#202
- Entity
- Relation
- Template

**Object:** A *named* collection of properties (data, state) & methods (instructions, behavior)

Q166: \_\_\_\_\_ / / / \_\_\_\_\_ / A Parallelogram represents the \_\_\_\_\_ flow chart element.

- Process
- Input or output      PG#105
- Decision
- Connector

Input or output



**Parallelogram.**



**Join our Facebook Group**

**CS101 - Introduction to Computing VU  
Group for All subjects**

Q167: Greedy algorithm does not support \_\_\_\_\_. situation.

- Local
- Global
- **Complex**
- All of the given

Q168: MS Word is a WYSIWYG-based Word processor.

**True**      **PG#83**

False

Word Processors

WYSIWYG (e.g. Word, WordPerfect, Star) or traditional markup (LaTeX)?

Q169: During one of the international cricket tournaments, one of the teams intentionally lost a match, so that they could qualify for the next round if they had won that match, some other team would have qualified this is an example of a \_\_\_\_\_

- Greedy algorithm
- **Non-greedy algorithm**      **PG#102**

**Greedy Algorithm: Counter Example**

During one of the international cricket tournaments, one of the teams intentionally lost a match, so that they could qualify for the next round

If they had won that particular match, some other team would have qualified

This is an example of a non-greedy algorithm

Q170: A data cell of a table contain

- Only text
- Images
- Tables
- All of the given PG#54

#### Data Cell

(Can contain paragraphs, images, lists, forms, tables)

Q171: Which of the following is incorrect for making design elements legible?

- Elements should be large enough
- Elements must contrast sufficiently
- Related elements should be visually grouped
- Elements should have no visual focus

#### Making Display Elements Legible:

##### 1. Designing (arranging) Display Elements

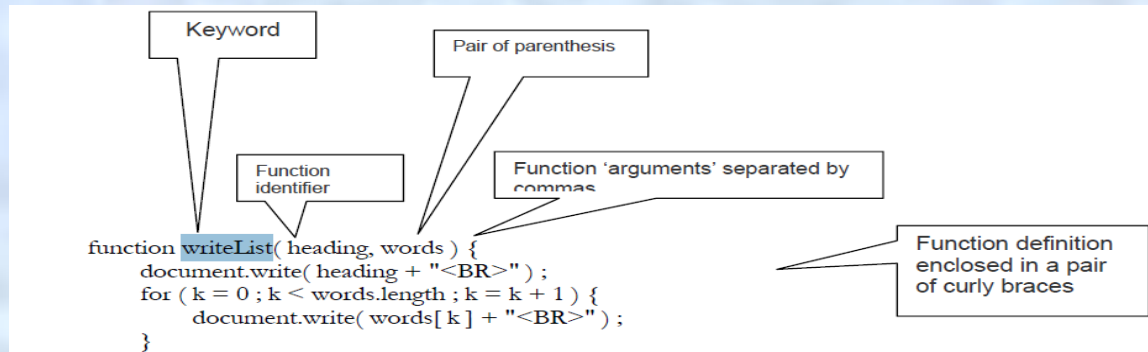
Elements must be large enough to be processed visually

Elements must contrast sufficiently with their backgrounds

Related elements should be visually grouped through the use of space, color, or graphical boundaries

Q172: Function WriteList(heading, words){//body of function} in above definition | WriteList |is the\_\_\_\_\_

- Keyword PG#201
- Function identifier
- Parameter
- Function prototype



Q173: There are mainly two types of networks according to network access policy namely:

- Public & commercial
- Private & public PG#186
- Private & Non- private
- None of the given choices

**Types of Computer Networks according to the network access policy**

- Private
- Public



Q174: In a system having many parts to be designed, one should always do the \_\_\_\_\_ first.

- Simple part
- Development part
- Quality part
- None of the given      PG#166

Given many parts of a system to be designed/built,  
do the **hard part** 1st

Q175: In JavaScript, arrays are implement in the form of:

- Array object      PG#199
- Array variable
- Array class
- None of the given choices

#### **Arrays in JavaScript**

In JavaScript, arrays are implemented in the form of the 'Array' object  
The key property of the 'Array' object is 'length', i.e the number of elements in an array

Q176: NIC stands for:

- Network Interface Card      PG#185
- Network International Card
- Network Interface Control
- None of the given choices

#### **Network Interface Cards (NIC)**

Q177: \_\_\_\_\_prevent collisions of packets caused by simultaneous transmission between two or more computers.

- Security
- Protocol PG#190
- Authorization
- None of the given choices

Protocols prevent collisions of packets caused by simultaneous transmission between two or more computers

Q178: The key benefits of VPNs over conventional PNs is:

- Security
- Efficiency
- Lower cost PG#187
- None of the given choices

Key benefit of VPNs over conventional PNs: Lower cost

Q179: JavaScript Arrays are \_\_\_\_\_

- Homogeneous
- Heterogeneous PG#180
- Homogeneous and Heterogeneous
- None of the given choices

JavaScript Arrays are Heterogeneous

Q180: \_\_\_\_\_ uses public telecom infrastructure, maintaining privacy through security procedures.

- ☐ Private network
- ☐ Public network
- ☒ VPN     PG#187
- ☐ None of the given

VPNs use public telecom infrastructure, maintaining privacy through security procedures

Q181: The function which call themselves from their (own) body are called:

- ☐ Virtual function
- ☐ Abstract function
- ☐ Overriding functions
- ☒ Recursive functions     [Click here for detail](#)

In computer science, one of the main ways that self-similarity is expressed is through a technique called **recursion**. Recursion is found whenever a function calls itself from within the body of its own code.

Q182: Efficiency is \_\_\_\_\_ to universality.

- ☒ Direct proportional
- ☐ Not proportional
- ☐ Equal
- ☐ None of the given

Q183: According to heuristic, if you can't explain it in \_\_\_\_\_ minutes, either you don't understand it or it does not work.

- ☐ 10
- ☒ 5 PG#166
- ☐ 2
- ☐ 1

If you can't explain it in 5 minutes, either you don't understand it or it does not work

Q184: (a) \_\_\_\_\_ is the concept embedded in an algorithm (soul!) and (b) \_\_\_\_\_ is the actual representation of an algorithm (the body!)

- ☒ (a) semantics (b) syntax PG#104
- ☐ syntax (b) semantics
- ☐ code (b) Logic
- ☐ sequence (b) Flow chart

Semantics:

The concept embedded in an algorithm (the soul!)

Syntax:

The actual representation of an algorithm (the body!)



Join our Facebook Group

**CS101 - Introduction to Computing VU**  
Group for All subjects



Q185: In a HTML form for file upload input element input element we use the following value in type attribute:

- Text
- Radio
- Hidden
- File PG#79

#### File Upload Input Element

```
<INPUT  
type="file"  
name="buttonName"  
value="nameOfSelectedFile"  
enctype="fileEncodingType"  
>
```

Q186: In a HTML form for Hidden INPUT field we use the following value in type attribute:

- Text
- Password
- Hidden PG#74
- Check box

#### Hidden Input

```
<INPUT  
type="hidden"  
name="fieldName"  
value="value"  
>
```

عقل مند کہتا ہے میں کچھ نہیں جانتا جبکہ بے وقوف کہتا ہے کہ میں سب کچھ جانتا ہوں

Q187: Operating system installed in a cell phone is a type \_\_\_\_\_

- ☐ Multi user operating system
- ☐ Distributed operating system
- ☒ Single user operating system
- ☐ None of the given

Q188: Quantum mechanics is the branch of \_\_\_\_\_; which describes the activity of subatomic particles.

- ☐ Chemistry
- ☐ Computer science
- ☒ Physics [Click here for detail](#)
- ☐ None of the given choices

Quantum Theory, also quantum mechanics, in physics, a theory based on using the concept of the quantum unit to describe the dynamic properties of subatomic particles and the interactions of matter and radiation.

Q189: Deep blue was the name of :

- ☐ Human
- ☒ Computer PG#9
- ☐ City
- ☐ None of given choices

In 1997 Deep Blue, a supercomputer designed by IBM, beat Gary Kasparov, the World Chess Champion  
That computer was exceptionally fast, did not get tired or bored.

Q190: What was the name of first computer that used |magnetic Tape| for programs storing?

- ENIAC
- EDVAC [Click here for detail](#)
- Harvard Mark 1
- Atanasoff-Berry Computer

EDVAC (electronic discrete variable computer) - First computer to use Magnetic Tape. This was a breakthrough as previous computers had to be re-programmed by re-wiring them whereas EDVAC could have new programs loaded off of the tape. Proposed by John von Neumann, it was completed in 1952 at the Institute for Advance Study, Princeton, USA.

Q191: \_\_\_\_\_ are personal computers that are designed to be easily transported and relocated

- Desktops
- Portables PG#21
- Servers
- Workstations

#### Portables

Portable computer is a personal computer that is designed to be easily transported and relocated, but is larger and less convenient to transport than a notebook computer. The earliest PCs designed for easy transport were called portables.

تم اچھا کرو زمانہ تم کو برا سمجھے یہ اس سے بہتر ہے کہ تم برا کرو اور زمانہ تم کو اچھا سمجھے

Q192: Web is a unique invention by humans in terms that it is:

- Accessible to all human PG#196
- Accessible to only the owners who control it
- Accessible to particular locations only
- None of the given choices

The Internet is unlike any previous human invention. It is a world-wide resource, Accessible to all of the humankind.

Q193: What are the conditions that must be fulfilled in order to use web?

- Computer is ON
- Web browser is available
- PC is connected to the Internet
- All of the given

Q194: Array can be defined as:

- An indexed list of elements PG#177
- A list of elements
- A collection of elements
- None of the given

**Array:**

An indexed list of elements

ایماندار کو غصہ دیر سے آتا ہے اور جلدی دور ہو جاتا ہے



Q195: UTP stands for:

- Ultra Twisted pair
- Unified Twisted Pair
- Unshielded Twisted Pair
- None of the given

Q196: \_\_\_\_\_ converts computer messages to electrical pulses that are suitable for transmission over the telephone line.

- Modulator PG#187
- Demodulator
- Modulator & Demodulator
- None of the given

Modulator converts computer messages to electrical pulses that are suitable for transmission over the telephone lines

Q198: Global variables are:

- Visible everywhere on the web page PG#204
- Visible only in the block in which they are declared
- Visible only in the main code
- None of the given choices

*Global Variables*

Visible everywhere on the Web page

Q199: WAN stands for:

- Wireless Area Network
- Wide Area Network PG#187
- Wide Air Network
- None of the given choices

WAN: Wide Area Network

Q200: Which variables can make the logic of a web page difficult to understand?

- Global PG#207
- Local
- Both Global and Local
- None of the given choices

Global variables can make the logic of a Web page difficult to understand

Q201: \_\_\_\_\_ Loop is flow control statement that allows code to be executed repeatedly based on a given Boolean condition.

- For
- Do-While
- If-else
- While

بري صحبت سے تنہائی بہتر ہے اور تنہائی سے نيك صحبت بہتر ہے

Q202: \_\_\_\_\_ is a system that guards a private network.

- Protocol
- **Firewall**      PG#191
- Communication channel
- None of the given choices

**Firewall**

A system that guards a private network, enforcing an access/deny policy to all traffic going to and coming from the Internet

Q203: Electrical pulses received over telephone line are converted into message ( comprehensible by the computer ) by using:

- Modulator
- **Demodulator**      PG#187
- Both Modulator and Demodulator
- None of the given choices

Demodulator converts electrical pulses received over telephone lines into messages that are comprehensible for computers

Q204: In partitioning program/module, it should be assured that partitioned chunks should be as \_\_\_\_\_ as possible.

- Dependent
- **Independent**
- Complex
- All of the given

Q205: Which one can lead user to leave your website

- Simple design
- Poor navigation PG#170
- Information layout
- Adaptable design

83% of users have left sites in frustration due to poor navigation, slowness (NetSmart Research)

Q206: \_\_\_\_\_ breaks down the message to be sent over the internet into packets.

- TCP PG#196
- IP
- SMTP
- None of the given

TCP breaks down the message to be sent over the Internet into packets



Join our Facebook Group

**CS101 - Introduction to Computing VU**  
**Group for All subjects**



Q207: Identify the correct statement about function arguments I) A comma-separated list of data II)

Define the interface b/w function and rest of code III) They are used to identify the function IV) They identify function's type.

- ☐ I and II only      PG#201
- ☐ II and III only
- ☐ III and IV only
- ☐ I,II and III only

#### **Arguments of a Function**

A comma-separated list of data

Arguments define the interface between the function and the rest of the Web page

Arguments values are passed to the function by value (some popular languages pass arguments 'by reference' as well)

To ensure that a function is defined before it is called up, define all functions in the HEAD portion of Web pages

Q208: Email uses \_\_\_\_\_ protocol.

- ☐ SMTP      PG#213
- ☐ HTTP
- ☐ FTP
- ☐ None of the given choices

#### **SMTP: Simple Mail Transfer Protocol**

A protocol used to send and receive eMail messages over a TCP/IP network



**Join our Facebook Group**

**CS101 - Introduction to Computing VU  
Group for All subjects**

Q209: Intel 8088 took \_\_\_\_\_ cycles to execute.

80

15 PG#31

20

50

A typical instruction in a processor like an 8088 took 15 clock cycles to Execute.

Q210: Intel 4004 processor based on . . . . . bits

- ☐ 8
- ☒ 4 PG#37
- ☐ 16
- ☐ 32

The 4004 dealt with data in chunks of 4-bits at a time

Q211: The name of very first computer was:

- ☒ ABC PG#14
- ☐ BCD
- ☐ EDC
- ☐ None of the given choices

### ABC – 1939

The Atanasoff-Berry Computer was the world's first electronic digital computer. It was built by John Vincent Atanasoff and Clifford Berry at Iowa State University during 1937-42.

Q212: An integrated circuit is made up of . . . . .

- Silicon      [Click here for detail](#)
- Conductor
- Insulator
- Metal

An [integrated circuit](#), commonly referred to as an IC, is a microscopic array of electronic circuits and components that has been diffused or implanted onto the surface of a single crystal, or chip, of [semiconducting](#) material such as silicon.

Q213: \_\_\_\_\_ is a related collection of WWW files that includes a beginning file called homepage.

- HTML
- HTTP
- Web Site      PG#18
- Web Page

A Web site is a related collection of World Wide Web (WWW) files that includes a beginning file called a home page.

Q214: The name of first electronic computer that stored entire program in its memory was:

- ENIAC
- Harvard Mark 1
- EDVAC
- Attanasoff-Berry Computer

Q215: The last famous electromechanical computer was:

- ENIAC
- Harvard Mark 1
- IBM-PC
- Atanasoff-Berry Computer

Q216: All the ideas of Babbage Analytical engine were included in:

- Atanasoff-Berry Computer
- Harvard Mark 1
- ENIAC
- Pentium

Q217: In anchor tag HREF attribute contain a.

- Numeric
- A URL
- A text value
- None of above

PG#270

link( URL ) <A href=URL> ...</A>

اللہ کا خوف سب سے بڑی دانائی ہے



Q218: Altair 8800 was based on \_\_\_\_\_ processor

- Intel 4004
- Intel 8080
- Intel 386
- Pentium

Q219: Babbage's Analytical Engine could store information permanently in:

- Magnetic Tape
- Floppy Disk
- Punched Cards PG#13
- None of the given choices

Babbage's Analytical Engine - 1833

Mechanical, digital, general-purpose

Was crank-driven

Could store instructions

Could perform mathematical calculations

Had the ability to print

Could punched cards as permanent memory

Q220: First computer that could not only manipulate numbers but also text data as well was:

- ENIAC
- EDVAC
- UNIVAC 1
- Attanasoff-Berry Computer

Q221: \_\_\_\_\_ has changed our way of life like no other technology.

- ☐ Computational technology
- ☐ Computer technology
- ☒ Computing technology PG#180
- ☐ None of the above

Computing technology has changed our way of life like no other technology

Q222: Smart editors they can automatically color different parts of statements in different colors e.g.

HTML tags in \_\_\_\_\_ color.

- ☐ Green
- ☐ Grey
- ☒ Blue PG#315
- ☐ None of the above

Automatically color different parts of statements in different colors, e.g. comments in Gray, strings in Green, HTML tags in Blue

Q223: When the packets reach destination \_\_\_\_\_ reassembles them into original message.

- ☐ Protocol
- ☒ TCP PG#317
- ☐ IP
- ☐ None of the above

When the packets reach the destination computer, TCP reassembles them into the original message

Q224: Because of computing, \_\_\_\_\_ profession(s) is /are being eliminated.

- Typists
- Bank tellers
- Telephone operators
- All of the given PG#281

**Old professions are being eliminated ...**

- Typists
- Bank tellers
- Telephone operators

Q225: \_\_\_\_\_ is a technique used create smooth animations or to display one of several images based on the requirement.

- Image preloading PG#286
- JavaScript
- Animated Gifs
- None of the given

**Image Preloading**

- The primary use for an Image object is to download an image into the cache before it is actually needed for display
- This technique can be used to create smooth animations or to display one of several images based on the requirement

زندگی میں کامیابی کا یہی راز ہے کہ پریشانیوں سے پریشان مت بنو

Q226: \_\_\_\_\_ is the member of Executive team.

- ☐ Project Manager
- ☐ **CEO PG#298**
- ☐ Team Lead
- ☐ None of the above

**Executive Team**

- CEO – Chief Executive Officer

Q227: \_\_\_\_\_ based on the principles of the logical reasoning ability of humans.

- ☐ Genetic Algorithms
- ☐ **Rule-Based System PG#242**
- ☐ Feed-Forward Network
- ☐ None of these

**Rulebased Systems (1):**

Based on the principles of the logical reasoning ability of humans

Q228: Internet is an example of \_\_\_\_\_ network.

- ☐ Private
- ☐ **Public PG#186**
- ☐ Both private and public
- ☐ None of the given choices

**Public Networks**

- All networks that are not private, are ... public
- **Example:** Internet



Q229: Row elements are called \_\_\_\_\_

- Records
- **Fields PG#262**
- Identifiers
- Data

Table rows are called records; row elements are called fields

Q230: E-mail system has \_\_\_\_\_ component(s)

- E-mail client
- SMTP server
- POP3 server
- **All of the given choices PG#213**

**How does an eMail system work?**

**But first, the components:**

eMail client  
SMTP server  
POP3 server

Q231: JavaScript was specially designed for writing \_\_\_\_\_ programs

- Subject-Driven Programs
- **Web Programs PG#321**
- Event-Driven Programs
- Structured Programs

JavaScript can be used (along with HTML) to develop interactive content for the Web

Q232: \_\_\_\_\_ are used to transferring files between computer on TCP/IP network

- ☐ **FTP**      **PG#234**
- ☐ DNS
- ☐ Telnet
- ☐ None of these

**FTP:**

Used to transfer files between computers on a TCP/IP network (e.g Internet)

Q233: The pattern in which computer are connected together to form a network is called:

- ☐ **Network Topology**      **PG#188**
- ☐ Network transmission
- ☐ Network protocol
- ☐ None of the given choices

**Network Topologies**

The pattern in which computers are connected to form a network

Q234: \_\_\_\_\_ is a branch of computer science concerned with manipulating and enhancing computer graphics.

- ☐ Image Handling
- ☐ **Image Processing**      **PG#237**
- ☐ Image Engineering
- ☐ None of these

**Image Processing:**

A branch of computer science concerned with manipulating and enhancing computer graphics

Q235: SVG stands for \_\_\_\_\_

- ☒ Structured vector Graphics PG#237
- ☐ Software vector Graphics
- ☐ Structured visual Graphics
- ☐ None of these

**SVG** (Structured Vector Graphics)

Q236: \_\_\_\_\_ is a network of computer that are lying within the same building or in vicinity.

- ☒ LAN PG#187
- ☐ WAN
- ☐ LAN and WAN
- ☐ None of the given choices

**LAN**

A network of computers located in the same building or a handful of nearby buildings

Examples:

–Computer network at your PVC

–Computer network of a University campus

Q237: The most common type of Relational database for server is \_\_\_\_\_

- ☐ Access
- ☐ Oracle
- ☒ MySQL
- ☐ Excel

Q238: The organizations are learning that business can be done in a more effective manner if emphasis is placed upon \_\_\_\_\_.

- Cooperation
- Shared responsibility
- Networking
- All of the given PG#281

The organizations are learning that business can be done in a more effective manner if emphasis is placed upon cooperation, shared responsibility and networking:

Q239: The browser breaks down the URL into \_\_\_\_\_ parts

- 2
- 3 PG#211
- 4
- 5

The browser breaks down the URL into 3 parts :

Protocol Identifier

Server Address

Directory & File Name

خود کو تمہیں سے بڑھ کر کوئی اچھا مشورہ نہیں دے سکتا



Q240: A large number of networks interconnected physically are called \_\_\_\_\_

- ☐ LAN
- ☐ MAN
- ☐ Internet PG#209
- ☐ None of above

**Internet: Network of Networks**

A large number of networks, interconnected physically

Capable of communicating and sharing data with each other

From the user's point view, Internet – a collection of interconnected networks – looks like a single, unified network

Q241: Module level design and unit testing the responsibility of \_\_\_\_\_

- ☐ Team Lead
- ☐ Developer PG#298
- ☐ Project Manager
- ☐ None of the above

**Developer**

**• Responsibilities:**

- Module-level design
- Coding
- Unit-testing



Join our Facebook Group

*CS101 - Introduction to Computing VU  
Group for All subjects*

Q242: The important attribute of image tag is \_\_\_\_\_

- ☐ src
- ☐ alt
- ☒ both "alt" and "src" [http://www.w3schools.com/tags/tag\\_img.asp](http://www.w3schools.com/tags/tag_img.asp)
- ☐ none of the above

The <img> tag has two required attributes: src and alt.

Q243: If you write program using good programming methodology then the overall cost & time of the program is \_\_\_\_\_

- ☐ Increased
- ☒ Reduced
- ☐ Doubled
- ☐ None of the above

Q244: Who routes the packets through the internet to get their destination?

- ☐ UDP
- ☐ TCP
- ☐ UCP
- ☒ IP PG#209

IP routes these packets through the Internet to get them to their destination

جو شخص ناکامیوں سے ٹر کر بھاگتا ہے کامیابی اُس سے ٹر کر بھاگتی ہے

Q245: Collection of facts & figures is called \_\_\_\_\_

- Information
- **Data** [Click here for detail](#)
- Entity
- None of the above

**Data** is a collection of raw facts and figures and statistics related to an object.

Q246: CMSO stands for

- **Chief Marketing & Sales Officer** PG#298
- Chief Management & Sales Officer
- Chief Marketing & Stock Officer
- None of the above

**CMSO – Chief Marketing & Sales Officer**

Q247: \_\_\_\_\_ is a field that uniquely identifies each record stored in a table.

- **Primary key** PG#263
- Foreign key
- Secondary key
- Special key

**Primary Key** is a field that uniquely identifies each record stored in a table

جو لوگوں کے سامنے فخر کرتا ہے وہ لوگوں کی نظروں سے گر جاتا ہے

Q248: Comments are used to make program more \_\_\_\_\_.

- ☐ Efficient
- ☐ Readable
- ☐ Inefficient
- ☐ None of the above

Q249: Someday it will be possible to load all the lectures, papers, books and s/w produced by an expert into an \_\_\_\_\_ system.

- ☐ Information
- ☐ Eco
- ☐ Intelligent [Click here for detail](#)
- ☐ None of the above

Someday it will be possible to load all the lectures, papers, books and SW produced by an expert into an intelligent system

Q250: Which one of the following is built- in computer memory containing data that normally can only be read, not written to?

- ☐ RAM
- ☐ ROM PG#25
- ☐ Cache Memory
- ☐ Magnetic Memory

#### ROM

ROM is "built-in" computer memory containing data that normally can only be read, not written to.



Q251: Which of the following is a computer storage device that saves and retrieves the data when required?

- ☒ **Hard Disk**      PG#25
- ☐ RAM
- ☐ ROM
- ☐ None of the given choices

**Hard disk**

Hard disk is a computer storage device which saves and retrieves the data when Required.

Q252: Which one of the following units can be called as the brain of computer microprocessor?

- ☐ ALU(Arithmetic & logic Unit)
- ☐ FPU(Floating Point Unit)
- ☒ **Control Unit**      PG#36
- ☐ Bus interface Unit

A control unit can be thought of as a finite state machine. It is called the brain of computer microprocessor

Q253: Which of the following translate a high level language code into machine understandable code?

- ☐ Computer
- ☐ Transistor
- ☒ **Compiler**      PG#130
- ☐ None of the above

A compiler translates high-level instructions directly into machine language

Q254: A hyper link in a web page is by default appearing as:

- Blue only
- Back and underlined
- Blue and bold
- **Blue and underlined**     [Click here for detail](#)

By default, when Word formats a hyperlink, the hyperlink appears blue with a blue underline

Q255: First computer designed for commercial applications was:

- **UNIVAC 1**     **PG#14**
- ENIAC
- EDVAC
- Attanasoff-Berry Computer

#### **UNIVAC 1 – 1951**

UNIVAC-1. The first commercially successful electronic computer, UNIVAC I, was also the first general purpose computer - designed to handle both numeric and textual information.

Q256: 1 byte consists of \_\_\_\_\_ bits.

- 10
- 9
- **8**     **PG#42**
- None of the given choices

**Byte = 8 bits**

Q257: The first programming language designed for the non-technical users, was:

- Visual Basic
- **Ada PG#9**
- Basic
- Cobol

Ada: the mother?

Wrote a program for computing the Bernoulli's sequence on the Analytical Engine - world's 1st computer program

Q258: If a computer could pass the Turing test then it would be able to :

- Win a million dollar prize
- **Think like human beings PG#13**
- Think but slower than humans
- Do the things faster

### **The "Turing test"**

A test proposed to determine if a computer has the ability to think. In 1950, Alan Turing (Turing, 1950) proposed a method for determining if machines can think. This method is known as The Turing Test

Q259: USB stands for

- Uniform system Bill
- Universal system Bus
- **Universal serial Bus PG#24**
- Unified sequential Bus

### **USB**

USB (Universal Serial Bus) is a plug-and-play hardware interface for peripherals such as the keyboard, mouse, joystick, scanner, printer and modem.

Q260: \_\_\_\_\_ are set of Rules & Regulation that provides communication in a network.

- ☐ Browser
- ☒ Protocol
- ☐ Internet Explorer
- ☐ Hyper Text

Q261: A communication protocol is a \_\_\_\_\_ that governs the flow of information over a network.

- ☐ Set of Methods
- ☐ Set of Functions
- ☒ Set of rules
- ☐ None of the given

Q262: Registers that hold read-only values are known as . . . . .

- ☒ Constant Registers PG#35
- ☐ Fixed Registers
- ☐ Vector Registers
- ☐ General purpose Registers

**Constant registers** hold read-only values (e.g zero or one).

عقل مند اپنے عیب خود دیکھتا ہے اور بیوقوفوں کے عیب دنیا دیکھتی ہے



**Q263:** The Capacity of a communication channel for carrying data is called:

- Base band
- Broad band
- **Bandwidth**
- None of the given choices

**Bandwidth**

Capacity of a communication channel for carrying data

Measured in bits/s (bps), kb/s, Mb/s, Gb/s, Tb/s

Optical fiber channels have the highest (1 Tb/s)

**Q264:** ARPANET was dissolved in:

- **1990 PG#197**
- 1991
- 1995
- None of the given choices

**1990's1990** - The ARPANET is dissolved

**Q265:** TCP stands for :

- Transmission control practical
- **Transmission control protocol PG#196**
- Transfer center protocol
- None of the given choices

**TCP** (Transmission Control Protocol)

Q266: Specifying the space in which a variable will be effective is called:

- Variable declaration
- Variable definition
- Variable scope PG#204
- Variable garbage collection

### Scope of Variable

Defining the space in which a variable is effective is known as defining the scope of a variable. A variable can be either *local* or *global* in scope.

Q267: JavaScript Array can hold elements of \_\_\_\_\_ simultaneously.

- Single data types
- Multiple data types PG #180
- Integers and strings only
- Integers and characters only

### JavaScript Arrays are Heterogeneous

Unlike many other popular languages, a JavaScript Array can hold elements of multiple data types, simultaneously

Q268: Avoid lines type shorter than \_\_\_\_\_ characters and longer than \_\_\_\_\_ characters.

- 40,60 PG#175
- 30,60
- 20,30
- None of the given

Avoid lines of type shorter than 40 characters and longer than 60 characters

Q269: Ethernet & Token Ring Protocol used in:

- ☐ LAN      PG#190
- ☐ WAN
- ☐ Both LAN and WAN
- ☐ None of the given choices

Several protocols are available for various types of networks. Here we discuss two that are popular for LANs: Ethernet; Token Ring

Q270: Using \_\_\_\_\_ networks access is restricted to authorized computers only.

- ☐ Public
- ☐ Private      PG#186
- ☐ Both Public & Private
- ☐ None of the given

#### **Private Networks**

• Organizations having many computers usually connect them in the form of private networks

Access to these networks is restricted to authorized computers only

Q271: Which of the following keyword is used to jump out of switch statement as soon as a match is found?

- ☐ Default
- ☐ Else
- ☐ Jump
- ☐ Break

Q272: \_\_\_\_\_ enables users located at far-way locations to easily share information with others located all over the world.

- Protocol
- Internet PG#196
- Communication channel
- None of the given

**Internet**

Enables users located at far-way locations to easily share information with others located all over the world

Q273: Good design should assist the user in

- Getting results
- Searching
- Recovering from errors PG#185
- Reading the information

**Good designs assist the user in recovering from errors**

Q274: In which topologies, network is not affected if one computer goes down?

- Star & Bus PG# 188 and 189
- Bus & Ring
- Ring & Star
- None of the given

**Star & Bus**

If any of the nodes goes down, the rest of the network is not affected



Q275: Files can be downloaded or uploaded using \_\_\_\_\_ protocol

- SMTP
- **FTP PG#185**
- TELNET
- None of the given choices

can download or upload files to a remote computer using the FTP protocol

Q276: There are mainly \_\_\_\_\_ types of network according to distance between the nodes.

- **2 PG#187**
- 3
- 4
- 5

**Types of Computer Networks  
according to the distance between nodes**

LAN: Local Area Network)

WAN: Wide Area Network)

Q277: In JavaScript Two of the key 'Array' methods are:

- onFocus( ) , count( )
- onBlur( ), sort( )
- **reverse( ), sort() PG#178**
- reverse( ), onclick( )

Two of the key 'Array' methods are:

- reverse()
- sort()

Q278: DARPA stands for:

- ☐ Defense Advanced Research Project Agency [Click here for detail](#)
- ☐ Direct Automatic Research Private Agency
- ☐ Defense Automatic Research Project Agency
- ☐ None of the given

Q279: hotWeather =(Temperature == 40); in the above statement, the variable hotWeather is of type

- ☐ number
- ☐ string
- ☐ Boolean
- ☐ None of the given

Q280: Declaring variables ( using the var keyword) within a function makes it:

- ☐ Local variable PG#207
- ☐ Global variable
- ☐ Abstract variable
- ☐ Parameter

### Local Variables

Declaring variables (using the var keyword) within a function, makes them *local*. They are available only within the function and hold no meaning outside of it

Q281: \_\_\_\_\_ is used to form a connection between two separate, but similar networks.

- ☐ Bridge PG#187
- ☐ Router
- ☐ Gateway
- ☐ None of the given choices

**Bridge**

Used to form a connection between two separate, but similar networks  
In a way, it creates an extended LAN by passing information between two or more LANs

Q282: \_\_\_\_\_ Network fails if a single node fails.

- ☐ Ring PG#189
- ☐ Bus
- ☐ Star
- ☐ None of the given choices

**Ring**

The network fails if a single node fails

Q283: Rule of thumb learned through trial & error is called

- ☐ Heuristic PG#166
- ☐ Mistake
- ☐ Common sense
- ☐ Experience

**Heuristic**

Rule of thumb learned through trial & error

Q284: \_\_\_\_\_ is a special purpose computer that directs the data traffic when several paths are available.

- Bridge
- Router PG#187
- Gateway
- None of the given choices

**Router**

A special-purpose computer that directs data traffic when several paths are available  
A router examines the destination info in each arriving packet and then routes it through the most efficient path available

Q285: NCSA stands for:

- National Center for Supercomputing Applications PG#197
- National Center for Supreme Applications
- National Center for Super Authority
- None of the given choices

**1972** - The National Center for Supercomputing Apps. (NCSA) develops the telnet application for remote login, making it easier to connect to a remote computer

Q286: Heuristics are used because they

- Always give the best results
- Mostly gives good-enough results PG#170
- Don't give wrong results
- Are commonly used as rule of thumb

**Heuristics don't always lead to the best results**

At times they even lead to the wrong ones, but mostly to results that are good-enough



Q287: In partitioning of program/module, it should be assured that partitioned chunks should be as \_\_\_\_\_ as possible.

- Dependent
- Independent PG#166
- Complex
- All of the above

In partitioning, choose the chunks so that they are as independent as possible

Q288: The MS DOS operating system came bundled with:

- UNIVAC1
- Cray 1
- IBM PC [Click here for detail](#)
- Altair 8800

In 1981, IBM introduced the "PC," which came bundled with MS-DOS, the first Microsoft operating system.

عقل مند آدمی اس وقت تک نہیں بولتا جب تک خاموشی نہیں ہو جاتی

Q289: Using \_\_\_\_\_ topology, adding new nodes is difficult.

- ☒ Ring PG#189
- ☐ Bus
- ☐ Star
- ☐ None of the given choices

**Ring**

New nodes are difficult to add

Q290: \_\_\_\_\_ is a special purpose computer that connects and translates between networks that use different communication protocols.

- ☐ Bridge
- ☐ Router
- ☒ Gateway PG#187
- ☐ None of the given choices

**Gateway**

A special-purpose computer that connects and translates between networks that use different communications protocols

Q291: First internet program was launched in:

- ☐ 1968
- ☒ 1969
- ☐ 1970
- ☐ 1978

Q292: Any variable in JavaScript can hold any type of value, and the that type can change midway through the program.

- ☒ True PG#144
- ☐ False

**JavaScript Variables are Dynamically Typed**

Any variable in JavaScript can hold any type of value, and that type can change midway through the program.

Q293: How many iterations would this “for” loop runs. For (x=6000;x>0;x=x-1){ document.  
Write(x);}

- ☐ 5900
- ☒ 6000 PG#164
- ☐ 6001
- ☐ None of the given

Q294: Which of the following are types of communication channels?

- ☐ Wire & Dedicated
- ☒ Wire & Wireless PG#190
- ☐ Wireless & Remote control
- ☐ None of the given choices

**Types of Communication Channels**

- 1 . Wire
- 2 . Wireless

Q295: For interesting work with images you need \_\_\_\_\_

- ☐ SP
- ☐ JSP
- ☒ JavaScript
- ☐ None of the above

Q296: Which is the protocol that is used to send and receive eMail message over TCP/IP network?

- ☐ FTP
- ☐ TCP
- ☐ telnet protocol
- ☒ SMTP PG#213

**SMTP: Simple Mail Transfer Protocol**

A protocol used to send and receive eMail messages over a TCP/IP network



Join our Facebook Group

*CS101 - Introduction to Computing VU  
Group for All subjects*

خوبصورتی علم و ادب سے ہوتی ہے لباس و حسن سے نہیں



Q297: \_\_\_\_\_ Team is responsible for the maintenance, expansion, improvement of the infrastructure consisting of workstations, networking equipment, software & network security.

- Support PG#300
- Configuration Management
- Quality Assurance
- None of the above

### Support Team

Responsible for the maintenance, expansion, improvement of the infrastructure consisting of:

- Workstations, servers, printers
- Networking equipment (router, switch, hub)
- SW (OS, development SW, productivity SW, etc.)
- Network security

Q298: In case of \_\_\_\_\_ mode, user starts a program which computer executes with the given data and produces results without any further intervention from user.

- Batch PG#81
- Interactive
- Time-Sharing
- User

### Batch-mode

The user starts the program and the computer processes the provided data and produces results without any further intervention of from the user

Example: Payroll

Q299: Assume that we want to create a text box which is invisible from the user and should only be used to provide data to the web server. Which of the following attributes will be used to make invisible?

- ☒ Hidden
- ☐ Invisible
- ☐ Secret
- ☐ Hide

Q300: Binary numbers are expressed in \_\_\_\_\_ notation

- ☒ Positional      PG#41
- ☐ Neutral
- ☐ Vertical
- ☐ horizontal

**Binary (base 2) numbers are also expressed in the *positional notation***

Q301: To select a single option from multiple options we use \_\_\_\_\_ control.

- ☐ Check box
- ☒ Radio box      [Click here for detail](#)
- ☐ Text box
- ☐ None of the given

#### Radio Button Control

Radio buttons are used when out of many options; just one option is required to be selected. They are also created using HTML `<input>` tag but type attribute is set to radio.

Q302: A truth table defines the output of \_\_\_\_\_ function W.r.t the inputs

- None PG#44
- Input
- Output
- Both input and output

A truth table defines the output of a logic function for all possible inputs

Q303: Algorithms is a \_\_\_\_\_

- Definition of problem
- Sequence of steps to solve problem PG#320
- Understanding of problem
- Solving a problem

### Algorithm

1st Definition:

Sequence of steps that is taken to solve a problem

Q304: Operating system talks to and manages devices through \_\_\_\_\_.

- Application
- Device driver PG#66
- Utility software
- None of the above

Applications talk to devices through the OS and OS talks to and manages devices through Device Drivers

Q305: Computer directly understand the \_\_\_\_\_ language

- Human
- High level
- Machine [Click here for detail](#) also on handout PG#59
- None of the given

### Machine Language

A system of codes directly understandable by a computer's CPU is termed this CPU's **native** or **machine language**. Although *machine code* may seem similar to *assembly language* they are in fact two different types of languages. Machine code is composed only of the two binary digits 0 and 1.

Q306: \_\_\_\_\_ Feature allows you to recover from mistakes.

- Copy
- Paste
- Cut
- Undo PG#225

The Best Feature: Undo

Allows you to recover from your mistakes

Allows you to experiment without risk

جھوٹ رزق کو کھا جاتا ہے



Q307: Avoid \_\_\_\_\_ to ensure readability of web page

- Overuse of bold and italics PG#175
- Use of paragraphs
- Use of white spaces
- Use of contrast colors

**Ensuring Text is Readable:**

Use sans serif (e.g. Arial, Helvetica, Verdana) typefaces for display on screen

Display type intended for continuous reading at 10 to 14 points

Avoid the overuse of bold and italics

Avoid setting type in all caps

Q308: \_\_\_\_\_ of the following is loop statement.

- For
- While
- Do-While
- All of the given

Q309: \_\_\_\_\_ is a smallest unit of data transmitted over a computer network.

- Frame
- Packet PG#186
- Message
- None of the given choices

**Packet**

• The smallest unit of data transmitted over a computer network

Q310: Communications on the internet is controlled by a set of two protocol , named:

- HTTP & SMTP
- FTP & TELNET
- TCP & IP PG#196
- None of the given choices

#### Internet Networking Protocols

Communications on the Internet is controlled by a set of two protocols: TCP and IP  
TCP/IP Transmission Control Protocol/Internet Protocol

Q311: JavaScript is not the object based language.

- True
- False PG#96

Script:

Is an interpreted language

Supports event-driven programming

Is object-based

Q312: VULMS is an example of \_\_\_\_\_ software.

- Engineering
- Entertainment
- Educational
- scientific

Virtual University Learning Management System (VULMS)

Q313: Algorithms is sequence of steps that can be taken to solve a given

- Task
- Process
- Problem PG#99
- All of the given

**Algorithm:**

Sequence of steps that can be taken to solve a given problem

Q314: Decision support systems are also called \_\_\_\_\_.

- Operating system
- Expert system PG#83
- ERP system
- None of the above

**DSS (Decision Support Systems) SW**

Sometimes also called "expert systems"

Q315: \_\_\_\_\_ is database management software.

- MS Access PG#262 [Click here for detail](#)
- MS Word
- MS Excel
- MS Paint

اپنی مرضی اور اللہ کی مرضی میں فرق کا نام غم ہے

Q316: Scheduling is performed by \_\_\_\_\_ of operating system

- Device driver
- **Kernel PG#67**
- Application program
- None of the given

### **Kernel**

The heart of the OS

Responsible for all the essential operations like basic house keeping, task scheduling, etc.

Also contains low-level HW interfaces

Size important, as it is memory-resident

Q317: Consider the statement: “window.alert(“message”);”

- It is syntax Error
- **It will cause a dialog box to be appeared**
- Syntax is correct, but will compile with a warning
- It will cause the “Message” to be copied to memory

Q318: The code in the \_\_\_\_\_ portion is the right choice for developing larger JavaScript's

- Body
- At End
- **Head PG#245**
- separate

The “code in the HEAD portion” is the right choice for developing larger JavaScript scripts

It makes the code easier to read

It allows the reuse of a function for multiple event handlers



Q319: In \_\_\_\_\_ automatic machines perform various tasks that were previously performed by human.

- Fuzzy Logic
- Robotics PG#244
- Rule based system
- None of these

**Robotics:**

Automatic machines that perform various tasks that were previously done by humans

Example:

Pilot-less combat airplanes

Land-mine hunters

Autonomous vacuum-cleaners

Components: Body structure, actuators, power-source, sensors, controller (the AI-based part)

Q320: The E-mail client sends message to :

- e-mail client
- SMTP server PG#213
- POP3 server
- All of the given choices

**SMTP: Simple Mail Transfer Protocol**

A protocol used to send and receive eMail messages over a TCP/IP network

ہر چیز کی ایک پہچان ہوتی ہے اور عقلمند کی پہچان غور و فکر کرنا ہے اور غور و فکر کی پہچان خاموشی ہے

Q321: Color mapping scheme reduce 2.25 MB graphics into \_\_\_\_\_MB.

- 0.90 MB
- 0.75 MB PG#236
- MB
- 0.5 MB

Each value, from 0 to 255, is mapped to a selected RGB color through a table, reducing the size of a 2.25MB graphic to 0.75MB

Q322: Using \_\_\_\_\_, a user can remotely log on to a computer (connected to the user through a network, e.g. internet) & have control over it like a local user, including control over running various programs?

FTP

TCP

Telnet Protocol PG#234

None of the given choices

**Telnet Protocol:**

Using Telnet, a user can remotely log on to a computer (connected to the user's through a TCP/IP network, e.g. Internet) & have control over it like a local user, including control over running various programs

ہر چیز کی ایک پہچان ہوتی ہے اور عقلمند کی پہچان غور و فکر کرنا ہے اور غور و فکر کی پہچان خاموشی ہے

Q323: \_\_\_\_\_ executes the specified JavaScript code when a window loses focus or a form element loses focus

- OnBlur PG#230
- onFocus
- onLoad
- onUnload

onBlur executes the specified JavaScript code when a window loses focus or a form element loses focus

Q324: Which protocol is used for receiving E-mail message?

- FTP
- POP PG#212
- Telnet Protocol
- SMTP

**POP3: Post Office Protocol**

A protocol used for receiving eMail messages

Q325: A user may access any item on the web through a \_\_\_\_\_

- HTTP
- SMPT
- URL PG#211
- None of the these

A user may access any item on the Web through a URL, e.g.  
<http://www.vu.edu.pk/cs/index.html>

Q326: In JavaScript every user-defined function must be written between \_\_\_\_\_ tag-set

- <JAVASCRIPT> </JAVASCRIPT>
- <SCRIPT> </SCRIPT>
- <FUNCTION> </FUNCTION>
- <CODE> </CODE>

Q327: A combination of \_\_\_\_\_ and \_\_\_\_\_ is called Desktop Publishing.

- Word processing , graphics design PG#88
- Word processing , spreadsheets
- spreadsheets, graphics design
- none of the above

#### Desktop Publishing (DTP)

A combination of word processing and graphic design. Used to develop elegant documents

Q328: HTML document allows including the web programming language code into itself.

- True
- False

ایماندار کو غصہ دیر سے آتا ہے اور جلدی دور ہو جاتا ہے



Q329: Decimal numbers system consist of \_\_\_\_\_ symbols

- ☐ 16
- ☐ 8
- ☒ 10      PG#39
- ☐ none

**DECIMAL  
(BASE 10)  
numbers**

Decimal (base 10) number system consists of 10 symbols or digits

Q330: A user plug in sound card in computer, \_\_\_\_\_ is required so that the sound card can perform its tasks.

- ☐ Hardware
- ☒ Device driver
- ☐ Application driver
- ☐ Compiler

Drivers are software's which are necessary for a device to function properly, for example, Sound Card drivers etc

بري صحبت سے تڙهي بهتر هه اور تڙهي سے نيك صحبت بهتر هه

Q331: \_\_\_\_\_ helps in finding synonyms as well as antonyms Word Processors

- Tables
- Thesaurus PG#89
- Spelling & Grammar
- Word count

### Thesaurus

My favorite tool

Helps you find synonyms and, sometimes, antonyms as well

Q332: Boolean variables can only have \_\_\_\_\_ values

- Hexa
- Decimal
- Binary PG#43
- Both Hexa & Decimal

### Boolean Logic Operations

Let  $x$ ,  $y$ ,  $z$  be Boolean variables. Boolean variables can only have binary values i.e., they can have values which are either 0 or 1.

اللہ کا خوف سب سے بڑی دانائی ہے

Q333: \_\_\_\_\_ performs all the controlling and management activities in a computer.

- Hardware
- Application software
- MS Word
- **Operating system**     [Click here for detail](#)

The Central Processing Unit ( CPU)

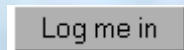
Often referred to as the “brain” of the computer.

Responsible for controlling all activities of the computer system

Q334: Assume that we want the text | save| to appear on a button, which attribute of the INPUT tag will be used to do that?

- Write
- Name
- **Value**     PG#75
- Type

`<input type="submit" name="login" value="Log me in">`



Q335: Disk operating system is \_\_\_\_\_ operating system

- Menu driven
- Graphical user interface
- **Command driven**
- None of the given

Q336: Objects are modified with \_\_\_\_\_ that are associated with that object.

- Properties
- Events
- **Methods PG # 130**
- Operators

Q337: The “Ockham’s Razor,” principle states that when choosing among competing, successful solutions to a problem; choose the one which is the least \_\_\_\_\_

- Time Consuming
- Ambiguous
- **Complex PG#101**
- Restricted

Q338: JavaScript can be used along with HTML to \_\_\_\_\_.

- style the Web
- secure the web page
- **make content interactive**
- color the web page

JavaScript can be used (along with HTML) to develop interactive content for the Web



Q339: Which one is the example of spreadsheet software?

- ☐ MS Word
- ☐ MS PowerPoint
- ☒ MS Excel
- ☐ MS Access

Q340: Fuzzy logic is based on \_\_\_\_\_.

- ☐ Ground facts
- ☐ Experience
- ☐ Practice
- ☒ Approximation      PG#251

**Fuzzy Logic (1):**

Based on the principles of the approximate reasoning faculty that humans use when faced with linguistic ambiguity.



Note: If you found any mistake in mcqz please mail at above mentioned email address. And tell me your answer with references.



*Winning is not everything,  
but wanting to win is  
everything.....  
Go Ahead.... Best Of Luck !*

JOKESMANTRA.COM

please pray for me  
and I will pray for you too



**THE END**

**Campus (AKMPO1)**

**ARSLAN ARSHAD**

[Arslan.arshad01@gmail.com](mailto:Arslan.arshad01@gmail.com)